
Product Datasheet

EPHB1/2 (phospho-Y594/604) antibody (orb224166)

Description

Rabbit polyclonal antibody to EPHB1/2

Species/Host

Rabbit

Reactivity

Human, Mouse, Rat

Conjugation

Unconjugated

Tested Applications

IF, WB

Immunogen

KLH-conjugated synthetic phosphopeptide corresponding to residues surrounding Y594/604 of human EPHB1/2 protein. The exact sequence is proprietary.

Target

EPHB1; EPHB2

Preservatives

Liquid in 0.42% Potassium phosphate, 0.87% Sodium chloride, pH 7.3, 30% glycerol, and 0.01% sodium azide.

Form/Appearance

Liquid in 0.42% Potassium phosphate, 0.87% Sodium chloride, pH 7.3, 30% glycerol, and 0.01% sodium azide.

Storage

Maintain refrigerated at 2-8°C for up to 2 weeks. For long term storage store at -20°C in small aliquots to prevent freeze-thaw cycles.

Note

For research use only

Clonality

Polyclonal

Source

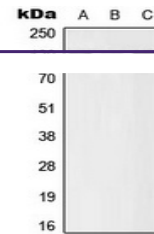
Rabbit

Uniprot ID
[P54763](#), [P54762](#), [P09759](#), [Q8CBF3](#), [P29323](#)
Entrez
[2047](#), [1969](#), [24338](#), [270190](#)
Dilution Range

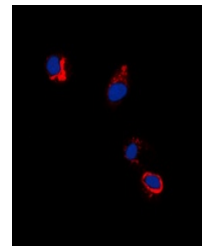
WB: 1:500-1:1000, IF/ICC: 1:100-1:500

Expiration Date

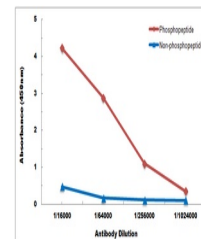
12 months from date of receipt.



Western blot analysis of EPHB1/2 (Phospho...



Immunofluorescent analysis of EPHB1/2 (P...



Direct ELISA antibody dose-response curv...