
Product Datasheet

Ah Receptor (phospho-S36) antibody (orb224164)

Description

Rabbit polyclonal antibody to Ah Receptor

Species/Host

Rabbit

Reactivity

Human, Mouse, Rabbit, Rat, Zebrafish

Conjugation

Unconjugated

Tested Applications

IH, WB

Immunogen

KLH-conjugated synthetic phosphopeptide corresponding to residues surrounding S36 of human Ah Receptor protein. The exact sequence is proprietary.

Target

AHR

Preservatives

Liquid in 0.42% Potassium phosphate, 0.87% Sodium chloride, pH 7.3, 30% glycerol, and 0.01% sodium azide.

Form/Appearance

Liquid in 0.42% Potassium phosphate, 0.87% Sodium chloride, pH 7.3, 30% glycerol, and 0.01% sodium azide.

Storage

Maintain refrigerated at 2-8°C for up to 2 weeks. For long term storage store at -20°C in small aliquots to prevent freeze-thaw cycles.

Note

For research use only

Clonality

Polyclonal

Source

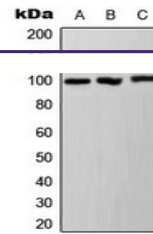
Rabbit

Uniprot ID
[P30561](#), [A9YTQ3](#), [P41738](#), [Q3U1U7](#), [Q75NT5](#), [P35869](#)
Entrez
[11624](#), [57491](#), [196](#), [25690](#), [11622](#), [498999](#)
Dilution Range

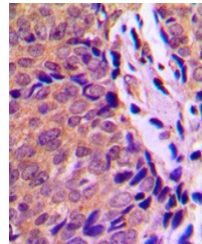
WB: 1:500-1:1000, IHC-P: 1:100-1:200, IP: 1:10-1:100

Expiration Date

12 months from date of receipt.



Western blot analysis of Ah Receptor (Ph...



Immunohistochemical analysis of Ah Receptor (Ph...