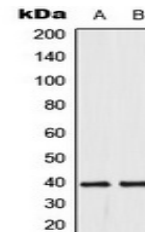


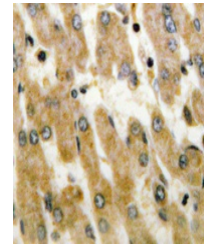
Product Datasheet

DUSP1/4 antibody (orb224163)

Description	Rabbit polyclonal antibody to DUSP1/4
Species/Host	Rabbit
Reactivity	Human, Mouse, Rat, Zebrafish
Conjugation	Unconjugated
Tested Applications	IH, WB
Immunogen	KLH-conjugated synthetic peptide encompassing a sequence within the C-term region of human DUSP1/4. The exact sequence is proprietary.
Target	DUSP1; DUSP4
Preservatives	Liquid in 0.42% Potassium phosphate, 0.87% Sodium chloride, pH 7.3, 30% glycerol, and 0.01% sodium azide.
Form/Appearance	Liquid in 0.42% Potassium phosphate, 0.87% Sodium chloride, pH 7.3, 30% glycerol, and 0.01% sodium azide.
Storage	Maintain refrigerated at 2-8°C for up to 2 weeks. For long term storage store at -20°C in small aliquots to prevent freeze-thaw cycles.
Note	For research use only
Clonality	Polyclonal
Source	Rabbit
Uniprot ID	Q64623 , P28562 , P28563 , Q13115 , Q8BFV3 , Q62767
Entrez	114856 , 19252 , 1843 , 319520 , 60587 , 1846
Dilution Range	WB: 1:500-1:1000, IHC-P: 1:100-1:200
Expiration Date	12 months from date of receipt.



Western blot analysis of DUSP1/4 express...



Immunohistochemical analysis of DUSP1/4

...