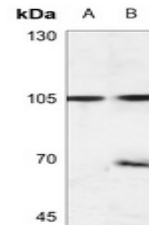


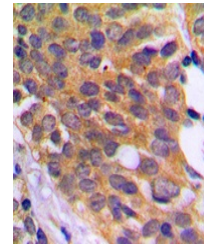
Product Datasheet

EEF2K (phospho-S366) antibody (orb224155)

Description	Rabbit polyclonal antibody to EEF2K (Phospho-S366)
Species/Host	Rabbit
Reactivity	Human, Primate, Rat
Conjugation	Unconjugated
Tested Applications	IH, WB
Immunogen	KLH-conjugated synthetic phosphopeptide corresponding to residues surrounding S366 of human EEF2K protein. The exact sequence is proprietary.
Target	EEF2K
Preservatives	Liquid in 0.42% Potassium phosphate, 0.87% Sodium chloride, pH 7.3, 30% glycerol, and 0.01% sodium azide.
Form/Appearance	Liquid in 0.42% Potassium phosphate, 0.87% Sodium chloride, pH 7.3, 30% glycerol, and 0.01% sodium azide.
Storage	Maintain refrigerated at 2-8°C for up to 2 weeks. For long term storage store at -20°C in small aliquots to prevent freeze-thaw cycles.
Note	For research use only
Clonality	Polyclonal
Source	Rabbit
Uniprot ID	P70531, O00418
Entrez	101930123, 29904, 25435
Dilution Range	WB: 1:500-1:1000, IHC-P: 1:100-1:200
Expiration Date	12 months from date of receipt.



Western blot analysis of EEF2K (Phospho-...



Immunohistochemical analysis of EEF2K (P...