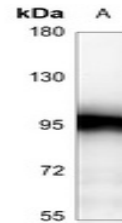


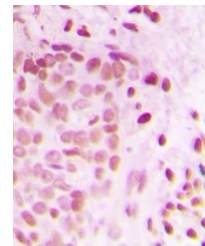
Product Datasheet

ATRIP antibody (orb224133)

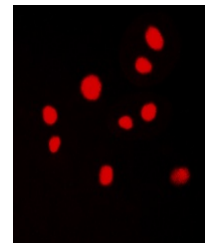
Description	Rabbit polyclonal antibody to ATRIP
Species/Host	Rabbit
Reactivity	Human, Mouse, Rat
Conjugation	Unconjugated
Tested Applications	FC, IF, IH, WB
Immunogen	KLH-conjugated synthetic peptide encompassing a sequence within the N-term region of human ATRIP. The exact sequence is proprietary.
Target	ATRIP
Preservatives	Liquid in 0.42% Potassium phosphate, 0.87% Sodium chloride, pH 7.3, 30% glycerol, and 0.01% sodium azide.
Form/Appearance	Liquid in 0.42% Potassium phosphate, 0.87% Sodium chloride, pH 7.3, 30% glycerol, and 0.01% sodium azide.
Storage	Maintain refrigerated at 2-8°C for up to 2 weeks. For long term storage store at -20°C in small aliquots to prevent freeze-thaw cycles.
Note	For research use only
Clonality	Polyclonal
Source	Rabbit
Uniprot ID	Q8BMG1 , Q8WXE1
Entrez	235610 , 84126
Dilution Range	WB: 1:500-1:1000, IHC-P: 1:100-1:200, IF/ICC: 1:100-1:500, FACS: 1:100-1:200
Expiration Date	12 months from date of receipt.



Western blot analysis of ATRIP expressio...



Immunohistochemical analysis of ATRIP st...



Immunofluorescent analysis of ATRIP stai...