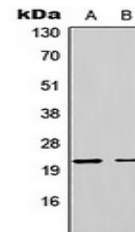


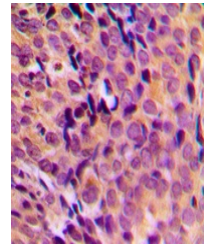
Product Datasheet

MRPL17 antibody (orb224116)

| | |
|----------------------------|---|
| Description | Rabbit polyclonal antibody to MRPL17 |
| Species/Host | Rabbit |
| Reactivity | Human, Mouse |
| Conjugation | Unconjugated |
| Tested Applications | IH, WB |
| Immunogen | KLH-conjugated synthetic peptide encompassing a sequence within the C-term region of human MRPL17. The exact sequence is proprietary. |
| Target | MRPL17 |
| Preservatives | Liquid in 0.42% Potassium phosphate, 0.87% Sodium chloride, pH 7.3, 30% glycerol, and 0.01% sodium azide. |
| Form/Appearance | Liquid in 0.42% Potassium phosphate, 0.87% Sodium chloride, pH 7.3, 30% glycerol, and 0.01% sodium azide. |
| Storage | Maintain refrigerated at 2-8°C for up to 2 weeks. For long term storage store at -20°C in small aliquots to prevent freeze-thaw cycles. |
| Note | For research use only |
| Clonality | Polyclonal |
| Source | Rabbit |
| Uniprot ID | Q9D8P4 , Q9NRX2 |
| Entrez | 27397 , 63875 |
| Dilution Range | WB: 1:500-1:1000, IHC-P: 1:100-1:200 |
| Expiration Date | 12 months from date of receipt. |



Western blot analysis of MRPL17 expressi...



Immunohistochemical analysis of MRPL17 S...