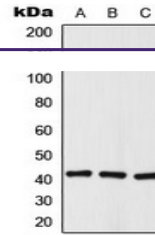

Product Datasheet

Histone Deacetylase 8 (phospho-S39) antibody (orb224107)

Description

Rabbit polyclonal antibody to Histone



Western blot analysis of Histone Deacetylase 8 protein.

Species/Host

Rabbit

Reactivity

Human, Mouse, Primate, Rat

Conjugation

Unconjugated

Tested Applications

IF, IH, WB

Immunogen

KLH-conjugated synthetic phosphopeptide corresponding to residues surrounding S39 of human Histone Deacetylase 8 protein. The exact sequence is proprietary.

Target

HDAC8

Preservatives

Liquid in 0.42% Potassium phosphate, 0.87% Sodium chloride, pH 7.3, 30% glycerol, and 0.01% sodium azide.

Form/Appearance

Liquid in 0.42% Potassium phosphate, 0.87% Sodium chloride, pH 7.3, 30% glycerol, and 0.01% sodium azide.

Storage

Maintain refrigerated at 2-8°C for up to 2 weeks. For long term storage store at -20°C in small aliquots to prevent freeze-thaw cycles.

Note

For research use only

Clonality

Polyclonal

Source

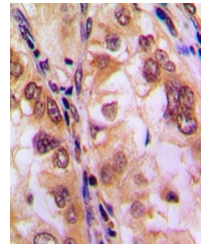
Rabbit

Uniprot ID
[Q9BY41](#), [B1WC68](#), [Q8VH37](#)
Entrez
[70315](#), [363481](#), [100911968](#), [55869](#)
Dilution Range

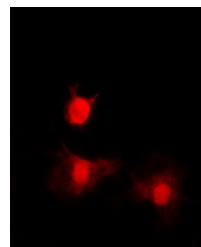
WB: 1:500-1:1000, IHC-P: 1:100-1:200, IF/ICC: 1:100-1:500

Expiration Date

12 months from date of receipt.



Immunohistochemical analysis of Histone Deacetylase 8 protein.



Immunofluorescent analysis of Histone Deacetylase 8 protein.