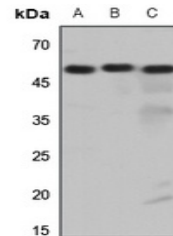


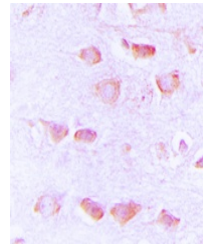
Product Datasheet

Histamine H3 Receptor antibody (orb224078)

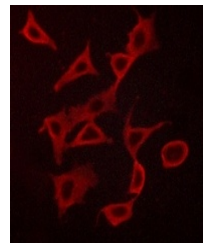
Description	Rabbit polyclonal antibody to Histamine H3 Receptor
Species/Host	Rabbit
Reactivity	Human, Mouse, Rat
Conjugation	Unconjugated
Tested Applications	IF, IH, WB
Immunogen	KLH-conjugated synthetic peptide encompassing a sequence within the center region of human Histamine H3 Receptor. The exact sequence is proprietary.
Target	HRH3
Preservatives	Liquid in 0.42% Potassium phosphate, 0.87% Sodium chloride, pH 7.3, 30% glycerol, and 0.01% sodium azide.
Form/Appearance	Liquid in 0.42% Potassium phosphate, 0.87% Sodium chloride, pH 7.3, 30% glycerol, and 0.01% sodium azide.
Storage	Maintain refrigerated at 2-8°C for up to 2 weeks. For long term storage store at -20°C in small aliquots to prevent freeze-thaw cycles.
Note	For research use only
Clonality	Polyclonal
Source	Rabbit
Uniprot ID	P58406 , Q9Y5N1 , Q9QYN8
Entrez	99296 , 11255 , 85268
Dilution Range	WB: 1:500-1:1000, IHC-P: 1:100-1:200
Expiration Date	12 months from date of receipt.



Western blot analysis of Histamine H3 Re...



Immunohistochemical analysis of Histamin...



Immunofluorescent analysis of Histamine

...