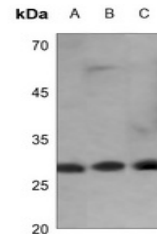


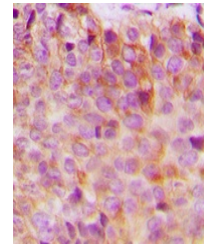
Product Datasheet

14-3-3 eta antibody (orb224040)

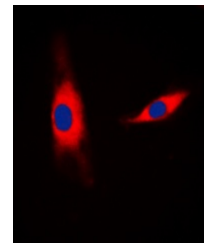
Description	Rabbit polyclonal antibody to 14-3-3 eta
Species/Host	Rabbit
Reactivity	Human, Mouse, Primate, Rat
Conjugation	Unconjugated
Tested Applications	IF, IH, WB
Immunogen	KLH-conjugated synthetic peptide encompassing a sequence within the center region of human 14-3-3 eta. The exact sequence is proprietary.
Target	YWHAH
Preservatives	Liquid in 0.42% Potassium phosphate, 0.87% Sodium chloride, pH 7.3, 30% glycerol, and 0.01% sodium azide.
Form/Appearance	Liquid in 0.42% Potassium phosphate, 0.87% Sodium chloride, pH 7.3, 30% glycerol, and 0.01% sodium azide.
Storage	Maintain refrigerated at 2-8°C for up to 2 weeks. For long term storage store at -20°C in small aliquots to prevent freeze-thaw cycles.
Note	For research use only
Clonality	Polyclonal
Source	Rabbit
Uniprot ID	P68511 , P68510 , Q04917
Entrez	22629 , 25576 , 7533
Dilution Range	WB: 1:500-1:1000, IHC-P: 1:100-1:200, IF/ICC: 1:100-1:500
Expiration Date	12 months from date of receipt.



Western blot analysis of 14-3-3 eta expr...



Immunohistochemical analysis of 14-3-3 e...



Immunofluorescent analysis of 14-3-3 eta...