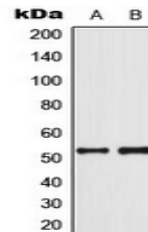


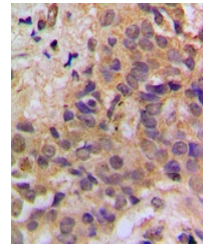
Product Datasheet

p53 (phospho-S37) antibody (orb224032)

Description	Rabbit polyclonal antibody to p53 (phospho-S37)
Species/Host	Rabbit
Reactivity	Human
Conjugation	Unconjugated
Tested Applications	IH, WB
Immunogen	KLH-conjugated synthetic phosphopeptide corresponding to residues surrounding S37 of human p53 protein. The exact sequence is proprietary.
Target	TP53
Preservatives	Liquid in 0.42% Potassium phosphate, 0.87% Sodium chloride, pH 7.3, 30% glycerol, and 0.01% sodium azide.
Form/Appearance	Liquid in 0.42% Potassium phosphate, 0.87% Sodium chloride, pH 7.3, 30% glycerol, and 0.01% sodium azide.
Storage	Maintain refrigerated at 2-8°C for up to 2 weeks. For long term storage store at -20°C in small aliquots to prevent freeze-thaw cycles.
Note	For research use only
Clonality	Polyclonal
Source	Rabbit
Uniprot ID	P04637
Entrez	7157
Dilution Range	WB: 1:500-1:1000, IHC-P: 1:100-1:200
Expiration Date	12 months from date of receipt.



Western blot analysis of p53 (Phospho-S3...



Immunohistochemical analysis of p53 (Pho...