
Product Datasheet

Histone H4 (phospho-S47) antibody (orb224030)

Description

Rabbit polyclonal antibody to Histone H4



Western blot analysis of Histone H4 (Pho...

Species/Host

Rabbit

Reactivity

Human, Rat

Conjugation

Unconjugated

Tested Applications

IF, WB

Immunogen

KLH-conjugated synthetic phosphopeptide corresponding to residues surrounding S47 of human Histone H4 protein. The exact sequence is proprietary.

Target

HIST1H4A

Preservatives

Liquid in 0.42% Potassium phosphate, 0.87% Sodium chloride, pH 7.3, 30% glycerol, and 0.01% sodium azide.

Form/Appearance

Liquid in 0.42% Potassium phosphate, 0.87% Sodium chloride, pH 7.3, 30% glycerol, and 0.01% sodium azide.

Storage

Maintain refrigerated at 2-8°C for up to 2 weeks. For long term storage store at -20°C in small aliquots to prevent freeze-thaw cycles.

Note

For research use only

Clonality

Polyclonal

Source

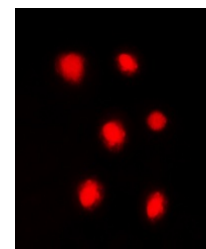
Rabbit

Uniprot ID
[P62805](#)
Entrez
[8368](#), [8359](#), [8365](#), [8360](#), [8364](#), [8366](#), [121504](#), [8363](#), [8367](#), [8362](#), [554313](#), [8361](#), [8370](#), [8294](#)
Dilution Range

WB: 1:500-1:1000, IF/ICC: 1:100-1:500

Expiration Date

12 months from date of receipt.



Immunofluorescent analysis of Histone H4...