

---

## Product Datasheet

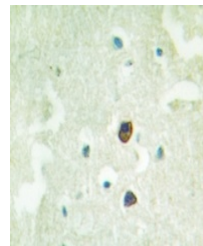
### TGF beta Receptor 2 (phospho-S225) antibody (orb224023)

**Description**

Rabbit polyclonal antibody against TGF beta



Western blot analysis of TGFBR2 (Phospho...



Immunohistochemical analysis of TGFBR2 (...

**Species/Host**

Rabbit

**Reactivity**

Human, Mouse, Porcine, Rabbit, Rat

**Conjugation**

Unconjugated

**Tested Applications**

IH, WB

**Immunogen**

KLH-conjugated synthetic phosphopeptide corresponding to residues surrounding S225 of human TGFBR2 protein. The exact sequence is proprietary.

**Target**

TGFBR2

**Preservatives**

Liquid in 0.42% Potassium phosphate, 0.87% Sodium chloride, pH 7.3, 30% glycerol, and 0.01% sodium azide.

**Form/Appearance**

Liquid in 0.42% Potassium phosphate, 0.87% Sodium chloride, pH 7.3, 30% glycerol, and 0.01% sodium azide.

**Storage**

Maintain refrigerated at 2-8°C for up to 2 weeks. For long term storage store at -20°C in small aliquots to prevent freeze-thaw cycles.

**Note**

For research use only

**Clonality**

Polyclonal

**Source**

Rabbit

**Uniprot ID**
[P38438](#), [P37173](#), [Q62312](#)
**Entrez**
[21813](#), [81810](#), [7048](#)
**Dilution Range**

WB: 1:500-1:1000

**Expiration Date**

12 months from date of receipt.