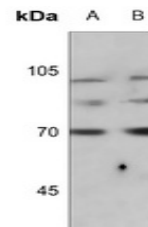


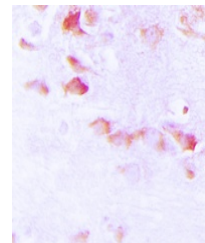
Product Datasheet

Synapsin 1 (phospho-S9) antibody (orb224019)

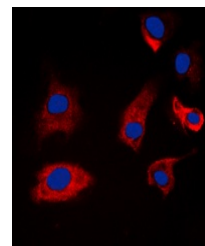
Description	Rabbit polyclonal antibody to Synapsin 1 (Phospho-S9)
Species/Host	Rabbit
Reactivity	Human, Mouse, Porcine, Rat
Conjugation	Unconjugated
Tested Applications	IF, IH, WB
Immunogen	KLH-conjugated synthetic phosphopeptide corresponding to residues surrounding S9 of human Synapsin 1 protein. The exact sequence is proprietary.
Target	SYN1
Preservatives	Liquid in 0.42% Potassium phosphate, 0.87% Sodium chloride, pH 7.3, 30% glycerol, and 0.01% sodium azide.
Form/Appearance	Liquid in 0.42% Potassium phosphate, 0.87% Sodium chloride, pH 7.3, 30% glycerol, and 0.01% sodium azide.
Storage	Maintain refrigerated at 2-8°C for up to 2 weeks. For long term storage store at -20°C in small aliquots to prevent freeze-thaw cycles.
Note	For research use only
Clonality	Polyclonal
Source	Rabbit
Uniprot ID	O88935 , P17600 , P09951
Entrez	20964 , 6853 , 24949
Dilution Range	WB: 1:500-1:1000, IHC-P: 1:100-1:200, IF/ICC: 1:100-1:500
Expiration Date	12 months from date of receipt.



Western blot analysis of Synapsin 1 (Pho...



Immunohistochemical analysis of Synapsin...



Immunofluorescent analysis of Synapsin 1...