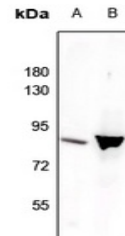


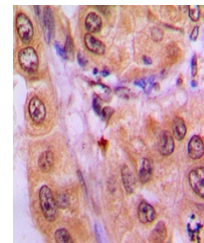
Product Datasheet

STAT3 (phospho-Y705) antibody (orb224010)

Description	Rabbit polyclonal antibody to STAT3 (Phospho-Y705)
Species/Host	Rabbit
Reactivity	Human, Mouse, Porcine, Rabbit, Rat, Sheep
Conjugation	Unconjugated
Tested Applications	IH, IP, WB
Immunogen	KLH-conjugated synthetic phosphopeptide corresponding to residues surrounding Y705 of human STAT3 protein. The exact sequence is proprietary.
Target	STAT3
Preservatives	Liquid in 0.42% Potassium phosphate, 0.87% Sodium chloride, pH 7.3, 30% glycerol, and 0.01% sodium azide.
Form/Appearance	Liquid in 0.42% Potassium phosphate, 0.87% Sodium chloride, pH 7.3, 30% glycerol, and 0.01% sodium azide.
Storage	Maintain refrigerated at 2-8°C for up to 2 weeks. For long term storage store at -20°C in small aliquots to prevent freeze-thaw cycles.
Note	For research use only
Clonality	Polyclonal
Source	Rabbit
Uniprot ID	P40763, P42227, P52631
Entrez	25125, 6774, 20848
Dilution Range	WB: 1:500-1:1000, IHC-P: 1:100-1:200, IP: 1:10-1:100
Expiration Date	12 months from date of receipt.



Western blot analysis of STAT3 (Phospho-...



Immunohistochemical analysis of STAT3 (P...