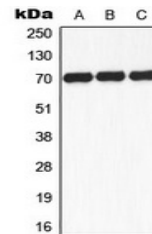


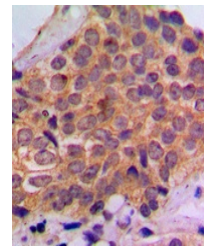
Product Datasheet

S6K1 (phospho-S434) antibody (orb224000)

Description	Rabbit polyclonal antibody to S6K1 (Phospho-S434)
Species/Host	Rabbit
Reactivity	Human, Mouse, Porcine, Rabbit, Rat
Conjugation	Unconjugated
Tested Applications	IH, WB
Immunogen	KLH-conjugated synthetic phosphopeptide corresponding to residues surrounding S434 of human S6K1 protein. The exact sequence is proprietary.
Target	RPS6KB1
Preservatives	Liquid in 0.42% Potassium phosphate, 0.87% Sodium chloride, pH 7.3, 30% glycerol, and 0.01% sodium azide.
Form/Appearance	Liquid in 0.42% Potassium phosphate, 0.87% Sodium chloride, pH 7.3, 30% glycerol, and 0.01% sodium azide.
Storage	Maintain refrigerated at 2-8°C for up to 2 weeks. For long term storage store at -20°C in small aliquots to prevent freeze-thaw cycles.
Note	For research use only
Clonality	Polyclonal
Source	Rabbit
Uniprot ID	P67999 , P23443 , Q8BSK8
Entrez	6198 , 72508 , 83840
Dilution Range	WB: 1:500-1:1000, IHC-P: 1:100-1:200, IF/ICC: 1:100-1:500, IP: 1:10-1:100
Expiration Date	12 months from date of receipt.



Western blot analysis of S6K1 (Phospho-S...



Immunohistochemical analysis of S6K1 (Ph...