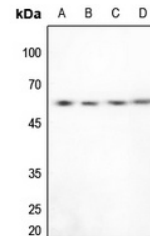


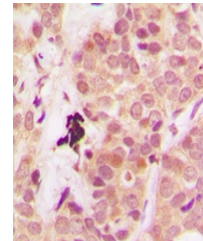
Product Datasheet

PTEN antibody (orb223991)

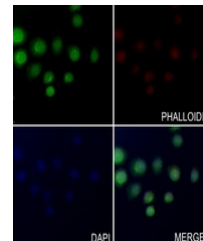
Description	Rabbit polyclonal antibody to PTEN
Species/Host	Rabbit
Reactivity	Human, Mouse, Rat, Zebrafish
Conjugation	Unconjugated
Tested Applications	IF, IH, WB
Immunogen	KLH-conjugated synthetic peptide encompassing a sequence within the C-term region of human PTEN. The exact sequence is proprietary.
Target	PTEN
Preservatives	Liquid in 0.42% Potassium phosphate, 0.87% Sodium chloride, pH 7.3, 30% glycerol, and 0.01% sodium azide.
Form/Appearance	Liquid in 0.42% Potassium phosphate, 0.87% Sodium chloride, pH 7.3, 30% glycerol, and 0.01% sodium azide.
Storage	Shipped at 4°C. Upon delivery aliquot and store at -20°C for one year. Avoid freeze/thaw cycles.
Note	For research use only
Clonality	Polyclonal
Source	Rabbit
Uniprot ID	O08586, P60484
Entrez	19211, 5728
Dilution Range	WB: 1:500-1:1000, IHC-P: 1:100-1:200, IP: 1:10-1:100
Expiration Date	12 months from date of receipt.



Western blot analysis of PTEN expression...



Immunohistochemical analysis of PTEN sta...



Immunofluorescent analysis of PTEN stain...