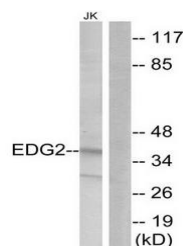


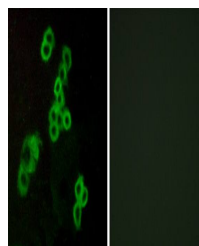
Product Datasheet

EDG2 antibody (orb223350)

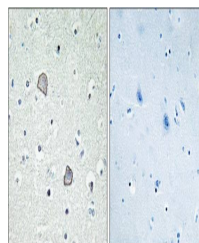
Description	Rabbit polyclonal antibody to EDG2
Species/Host	Rabbit
Reactivity	Human, Rat
Conjugation	Unconjugated
Tested Applications	IF, IHC, WB
Immunogen	N-terminal
Concentration	1mg/ml
Storage	Maintain refrigerated at 2-8°C for up to 2 weeks. For long term storage store at -20°C in small aliquots to prevent freeze-thaw cycles.
Note	For research use only
Clonality	Polyclonal
Uniprot ID	Q92633
Dilution Range	WB: 1:500-1:3000, IHC-P: 1:50-1:100, IF/ICC: 1:100-1:500, ELISA: 1:1000
Expiration Date	12 months from date of receipt.



Western blot analysis of Jurkat cells us...



Immunofluorescence analysis of MCF-7 cel...



Immunohistochemistry analysis of human b...