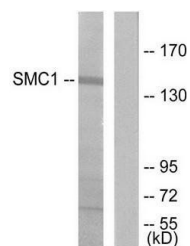


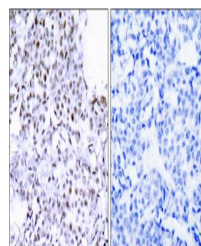
Product Datasheet

SMC1 antibody (orb223194)

| | |
|----------------------------|---|
| Description | Rabbit polyclonal antibody to SMC1 |
| Species/Host | Rabbit |
| Reactivity | Human, Mouse |
| Conjugation | Unconjugated |
| Tested Applications | IHC, WB |
| Immunogen | Internal |
| Concentration | 1mg/ml |
| Storage | Maintain refrigerated at 2-8°C for up to 2 weeks. For long term storage store at -20°C in small aliquots to prevent freeze-thaw cycles. |
| Note | For research use only |
| Clonality | Polyclonal |
| Uniprot ID | Q14683 |
| Dilution Range | WB: 1:500-1:3000, IHC-P: 1:50-1:100, ELISA: 1:10000 |
| Expiration Date | 12 months from date of receipt. |



Western blot analysis of 293 cells using...



Immunohistochemistry analysis of human b...