

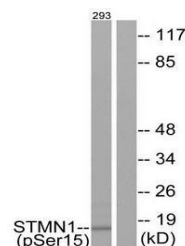
Product Datasheet

Stathmin 1 (Phospho-Ser15) antibody (orb223113)

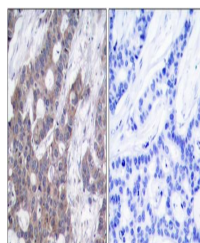
Description	Rabbit polyclonal antibody to Stathmin 1
Species/Host	Rabbit
Reactivity	Human, Mouse, Rat
Conjugation	Unconjugated
Tested Applications	IF, IHC, WB
Immunogen	N-terminal
Concentration	1mg/ml
Storage	Maintain refrigerated at 2-8°C for up to 2 weeks. For long term storage store at -20°C in small aliquots to prevent freeze-thaw cycles.
Note	For research use only
Clonality	Polyclonal
Uniprot ID	P16949
Dilution Range	WB: 1:500-1:3000, IHC-P: 1:50-1:100, IF/ICC: 1:100-1:500, ELISA: 1:10000
Expiration Date	12 months from date of receipt.



Immunofluorescence analysis of COS-7 cel...



Western blot analysis of 293 cells using...



Immunohistochemistry analysis of human t...