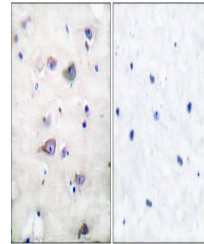


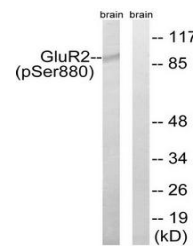
Product Datasheet

GluR2 (Phospho-Ser880) antibody (orb223014)

| | |
|----------------------------|---|
| Description | Rabbit polyclonal antibody to GluR2 |
| Species/Host | Rabbit |
| Reactivity | Human, Mouse, Rat |
| Conjugation | Unconjugated |
| Tested Applications | IHC, WB |
| Immunogen | C-terminal |
| Concentration | 1mg/ml |
| Storage | Maintain refrigerated at 2-8°C for up to 2 weeks. For long term storage store at -20°C in small aliquots to prevent freeze-thaw cycles. |
| Note | For research use only |
| Clonality | Polyclonal |
| Uniprot ID | P42262 |
| Dilution Range | WB: 1:500-1:3000, IHC-P: 1:50-1:100, ELISA: 1:20000 |
| Expiration Date | 12 months from date of receipt. |



Immunohistochemical analysis of human brain...



Western blot analysis of mouse brain tissue...