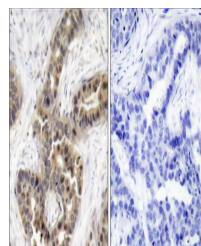


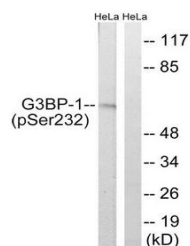
Product Datasheet

G3BP-1 (Phospho-Ser232) antibody (orb223008)

Description	Rabbit polyclonal antibody to G3BP-1
Species/Host	Rabbit
Reactivity	Human, Mouse
Conjugation	Unconjugated
Tested Applications	IHC, WB
Immunogen	Internal
Concentration	1mg/ml
Note	For research use only
Clonality	Polyclonal
Uniprot ID	Q13283
Dilution Range	WB: 1:500-1:3000, IHC-P: 1:50-1:100, ELISA: 1:1000
Expiration Date	12 months from date of receipt.



Immunohistochemical analysis of human brain tissue.



Western blot analysis of HeLa cells using G3BP-1 (pSer232) antibody.