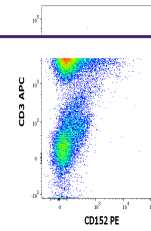

Product Datasheet

CTLA4 antibody (PE) (orb222750)

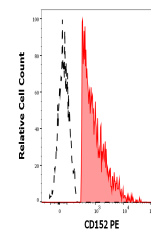
Description

Mouse monoclonal antibody against CTLA4 conjugated to

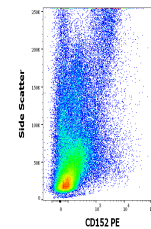
Reactivity	Human
Conjugation	PE
Tested Applications	FC
Immunogen	Human CD152-IgG heavy chain fusion protein
Target	CD152
Preservatives	Stabilizing phosphate buffered saline (PBS), pH 7.4, 15 mM sodium azide
Storage	Store at 2-8°C. Protect from prolonged exposure to light. Do not freeze.
Note	For research use only
Application notes	Flow cytometry: The reagent is designed for analysis of human blood cells using 10 µl reagent / 100 µl of whole blood or 10 ⁶ cells in a suspension. The content of a vial (1 ml) is sufficient for 100 tests.
Isotype	Mouse IgG2a
Clonality	Monoclonal
Purity	Purified antibody is conjugated with R-phycoerythrin (PE) under optimum conditions. Unconjugated antibody and free fluorochrome are removed by size-exclusion chromatography.
Uniprot ID	P16410
Entrez	1493
Dilution Range	Flow cytometry: The reagent is designed for analysis of human blood cells using 10 µl reagent / 100 µl of whole blood or 10 ⁶ cells in a suspension. The content of a vial (1 ml) is sufficient for 100 tests.
Expiration Date	12 months from date of receipt.



Flow cytometry multicolor surface staini...



Separation of human CD152 positive CD3 p...



Flow cytometry surface staining pattern ...