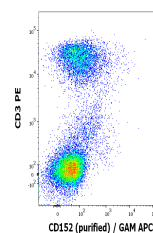


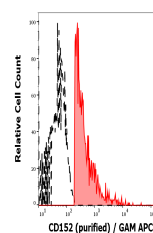
Product Datasheet

CTLA4 antibody (orb222748)

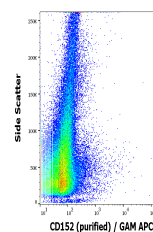
Description	Mouse monoclonal antibody to CTLA4
Reactivity	Human
Conjugation	Unconjugated
Tested Applications	FC, ICC, IHC-Fr, IP
Immunogen	Human CD152-IgG heavy chain fusion protein
Target	CD152
Preservatives	Phosphate buffered saline (PBS), pH 7.4, 15 mM sodium azide
Concentration	1 mg/ml
Storage	Store at 2-8°C. Do not freeze.
Note	For research use only
Application notes	Flow cytometry: Recommended dilution: 2-5 µg/ml, Intracellular staining.
Isotype	Mouse IgG2a
Clonality	Monoclonal
Purity	Purified by protein-A affinity chromatography.
Uniprot ID	P16410
Entrez	1493
Dilution Range	Flow cytometry: Recommended dilution: 2-5 µg/ml, Intracellular staining.
Expiration Date	12 months from date of receipt.



Flow cytometry multicolor surface staini...



Separation of human CD152 positive CD3 p...



Flow cytometry surface staining pattern ...