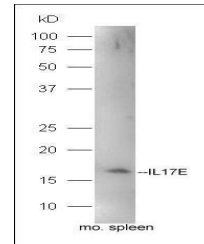


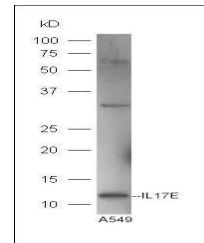
Product Datasheet

IL17E antibody (FITC) (orb222113)

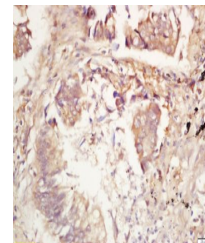
Description	Rabbit polyclonal antibody against IL17E conjugated to FITC.
Species/Host	Rabbit
Reactivity	Human, Mouse
Conjugation	FITC
Tested Applications	ICC, IF
Immunogen	KLH conjugated synthetic peptide derived from human IL17E
Target	IL25
Preservatives	0.01M TBS(pH7.4) with 1% rAlbumin, 0.03% Proclin300 and 50% Glycerol.
Form/Appearance	Lyophilized or Liquid
Concentration	- 100 µg (in 100 µl): 1 mg/ml
Storage	Store at -20 °C for one year. Avoid repeated freeze/thaw cycles. The lyophilized antibody is stable at room temperature for at least one month and for greater than a year when kept at -20°C. When reconstituted in sterile pH 7.4 0.01M PBS or diluent of antibody the antibody is stable for at least two weeks at 2-4 °C.
Note	For research use only
Isotype	IgG
Clonality	Polyclonal
MW	17kDa
Uniprot ID	Q9H293
Dilution Range	IF=1:100-500,ICC=1:100-500
Expiration Date	12 months from date of receipt.



Western blot analysis of mouse spleen ce...



Western blot analysis of A549 lysate usi...



Immunohistochemical staining of human lu...