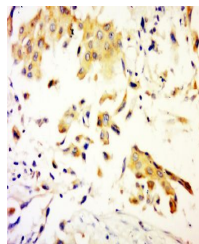


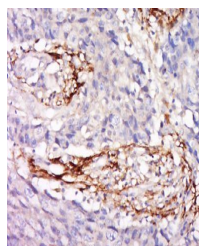
Product Datasheet

Zinc Alpha 2 Glycoprotein antibody (orb221983)

Description	Zinc Alpha 2 Glycoprotein antibody
Species/Host	Rabbit
Reactivity	Human
Conjugation	Unconjugated
Tested Applications	ELISA, ICC, IF, IHC-Fr, IHC-P
Immunogen	KLH conjugated synthetic peptide derived from human Zinc Alpha 2 Glycoprotein (21-120/295 aa)
Target	Zinc Alpha 2 Glycoprotein
Preservatives	0.01M TBS(pH7.4) with 1% rAlbumin, 0.03% Proclin300 and 50% Glycerol.
Form/Appearance	Liquid
Concentration	1mg/ml
Storage	Shipped at 4°C. Store at -20 °C for one year. Avoid repeated freeze/thaw cycles.
Note	For research use only
Isotype	IgG
Clonality	Polyclonal
MW	32 kDa
Uniprot ID	P25311
Expiration Date	12 months from date of receipt.



Immunohistochemical staining of human ma...



Immunohistochemical staining of human co...