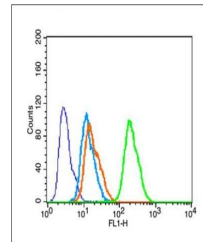


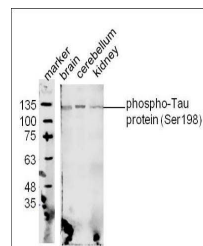
Product Datasheet

Tau protein (phospho-Ser198) antibody (orb221938)

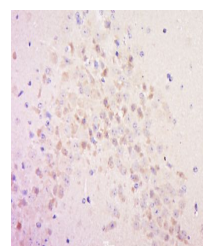
Description	Tau protein (phospho-Ser198) antibody
Species/Host	Rabbit
Reactivity	Human, Mouse, Rat
Conjugation	Unconjugated
Tested Applications	FC, IHC-P, WB
Immunogen	KLH conjugated Synthesised phosphopeptide derived from human Tau around the phosphorylation site of Ser198 (GY(P-S)SP)
Target	phospho-Tau (Ser198)
Preservatives	0.01M TBS(pH7.4) with 1% rAlbumin, 0.03% Proclin300 and 50% Glycerol.
Form/Appearance	Liquid
Concentration	1mg/ml
Storage	Shipped at 4°C. Store at -20 °C for one year. Avoid repeated freeze/thaw cycles.
Note	For research use only
Isotype	IgG
Clonality	Polyclonal
MW	52/79 kDa
Uniprot ID	P10636
Dilution Range	WB=1:500-2000, IHC-P=1:100-500, Flow-Cyt=1µg/Test, IHC-F=1:100-500, ICC=1:100-500, IF=1:100-500, ELISA=1:5000-10000
Expiration Date	12 months from date of receipt.



Flow cytometric analysis of MCF 7 Cell
U...



Western blot analysis of 1.brain lysates(...



Immunohistochemical staining of Mouse br...