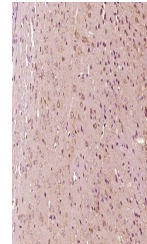


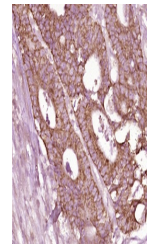
Product Datasheet

N ras + c Ha ras antibody (orb221571)

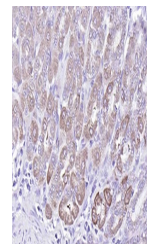
| | |
|----------------------------|---|
| Description | N ras + c Ha ras antibody |
| Species/Host | Rabbit |
| Reactivity | Human, Mouse, Rat |
| Conjugation | Unconjugated |
| Tested Applications | IHC-P, WB |
| Immunogen | KLH conjugated synthetic peptide derived from human N ras + c Ha ras (101-189/189 aa) |
| Target | N ras + c Ha ras |
| Preservatives | 0.01M TBS(pH7.4) with 1% rAlbumin, 0.03% Proclin300 and 50% Glycerol. |
| Form/Appearance | Liquid |
| Concentration | 1mg/ml |
| Storage | Maintain refrigerated at 2-8°C for up to 2 weeks. For long term storage store at -20°C in small aliquots to prevent freeze-thaw cycles. |
| Note | For research use only |
| Isotype | IgG |
| Clonality | Polyclonal |
| MW | 21 kDa |
| Uniprot ID | P01112 |
| Dilution Range | WB=1:500-2000, IHC-P=1:100-500 |
| Expiration Date | 12 months from date of receipt. |



IHC-P analysis of Mouse brain using N ra...



IHC-P analysis of human cervical carcino...



IHC-P analysis of rat stomach using N ra...