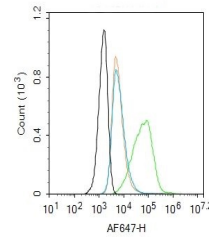


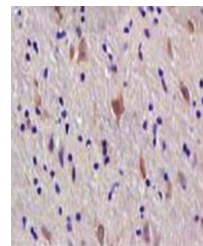
Product Datasheet

Melatonin Receptor 1A antibody (orb221456)

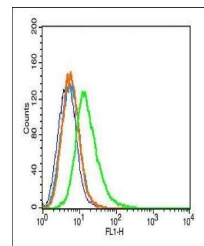
Description	Melatonin Receptor 1A antibody
Species/Host	Rabbit
Reactivity	Human, Mouse, Rat
Conjugation	Unconjugated
Tested Applications	IHC-P, WB
Immunogen	KLH conjugated synthetic peptide derived from the middle of human MTNR1A (201-280/350 aa)
Target	Melatonin Receptor 1A
Preservatives	0.01M TBS(pH7.4) with 1% rAlbumin, 0.03% Proclin300 and 50% Glycerol.
Form/Appearance	Liquid
Concentration	1mg/ml
Storage	Shipped at 4°C. Store at -20 °C for one year. Avoid repeated freeze/thaw cycles.
Note	For research use only
Isotype	IgG
Clonality	Polyclonal
MW	39 kDa
Uniprot ID	P48039
Dilution Range	WB=1:500-2000, IHC-P=1:100-500
Expiration Date	12 months from date of receipt.



Flow cytometric analysis of SH-SY5Y cells using AF647-H.



Immunohistochemical staining of rat brain tissue showing Melatonin Receptor 1A expression.



Flow cytometric analysis of Rsc96 cells using FL1-H.