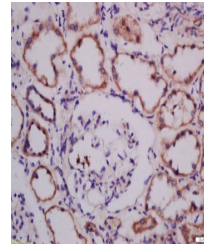


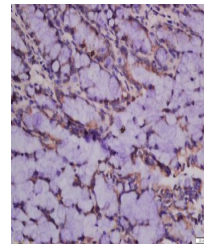
Product Datasheet

ATG101 antibody (orb221335)

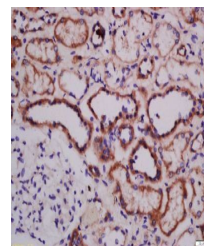
Description	ATG101 antibody
Species/Host	Rabbit
Reactivity	Human
Conjugation	Unconjugated
Tested Applications	ELISA, ICC, IF, IHC-Fr, IHC-P
Immunogen	KLH conjugated synthetic peptide derived from human ATG101 (121-218/218 aa)
Target	ATG101
Preservatives	0.01M TBS(pH7.4) with 1% rAlbumin, 0.03% Proclin300 and 50% Glycerol.
Form/Appearance	Liquid
Concentration	1mg/ml
Storage	Shipped at 4°C. Store at -20 °C for one year. Avoid repeated freeze/thaw cycles.
Note	For research use only
Isotype	IgG
Clonality	Polyclonal
MW	25 kDa
Uniprot ID	Q9BSB4
Expiration Date	12 months from date of receipt.



Immunohistochemical staining of human ki...



Immunohistochemical staining of rat inte...



Immunohistochemical staining of human ki...