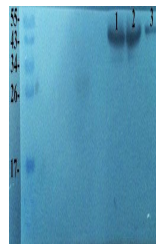


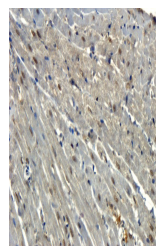
Product Datasheet

Snail antibody (orb221325)

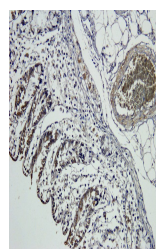
Description	Snail antibody
Species/Host	Rabbit
Reactivity	Human, Mouse, Porcine, Rat
Conjugation	Unconjugated
Tested Applications	ELISA, ICC, IF, IHC-P, WB
Immunogen	KLH conjugated synthetic peptide derived from human Snail. Please contact us for the exact immunogen sequence. The peptide is available as orb374841.
Target	Snail
Form/Appearance	10 mM PBS, 0.02% sodium azide
Concentration	- 100 µg (in 200 µl): 0.5 mg/ml- 200 µg (in 400 µl): 0.5 mg/ml
Storage	Store at 4°C for up to two weeks. For long term storage, aliquot and store at -20°C, avoid freeze/thaw cycles.
Note	For research use only
Isotype	IgG
Clonality	Polyclonal
Purity	Polyclonal antibodies are purified by peptide affinity chromatography
MW	29 kDa
Uniprot ID	O95863 , Q02085 , Q6AY35
NCBI	21 , 31 , 005985 , 005976
Entrez	6615
Dilution Range	IF/ICC: 1:100, IHC-P: 1:100, WB: 2 µg/ml
Expiration Date	12 months from date of receipt.



Western blot analysis of human breast ca...



IHC-P image of rat ihc-p tissue using an...



IHC-P image of pig ihc-p tissue using an...