

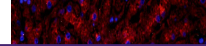
---

## Product Datasheet

### TNF alpha antibody (orb221324)

**Description**

TNF alpha antibody



**Species/Host**

Rabbit

**Reactivity**

Human, Mouse, Porcine, Rat

**Conjugation**

Unconjugated

**Tested Applications**

ELISA, ICC, IF, IHC-P

**Immunogen**

KLH conjugated synthetic peptide derived from human TNF alpha. Please contact us for the exact immunogen sequence. The peptide is available as orb374840.

Immunofluorescence analysis of pig liver...

**Target**

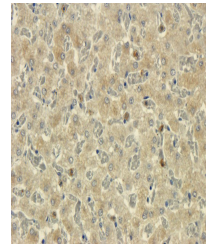
TNF alpha

**Form/Appearance**

10 mM PBS, 0.02% sodium azide

**Concentration**

- 100 µg (in 200 µl): 0.5 mg/ml- 200 µg (in 400 µl): 0.5 mg/ml



IHC-P staining of pig liver tissue using...

**Storage**

Store at 4°C for up to two weeks. For long term storage, aliquot and store at -20°C, avoid freeze/thaw cycles.

**Note**

For research use only

**Isotype**

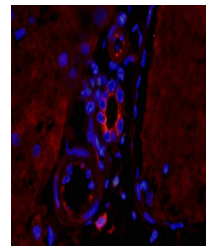
IgG

**Clonality**

Polyclonal

**Purity**

Polyclonal antibodies are purified by peptide affinity chromatography



IF image of pig liver vessel tissue usin...

**MW**

17/26 kDa

**Uniprot ID**

[P06804](#), [P16599](#), [P01375](#)

**NCBI**

[000594](#), [000585](#)

**Entrez**

[7124](#)

**Dilution Range**

IF/ICC: 1:100, IHC-P: 1:100

**Expiration Date**

12 months from date of receipt.