
Product Datasheet

IL10 antibody (orb221323)

Description

IL10 antibody

Species/Host

Rabbit

Reactivity

Human, Mouse, Porcine, Rat

Conjugation

Unconjugated

Tested Applications

IHC-P

Immunogen

KLH conjugated synthetic peptide derived from human IL10. Please contact us for the exact immunogen sequence. The peptide is available as orb374839.

Target

IL10

Form/Appearance

10 mM PBS, 0.02% sodium azide

Concentration

- 100 µg (in 200 µl): 0.5 mg/ml- 200 µg (in 400 µl): 0.5 mg/ml

Storage

Store at 4°C for up to two weeks. For long term storage, aliquot and store at -20°C, avoid freeze/thaw cycles.

Note

For research use only

Isotype

IgG

Clonality

Polyclonal

Purity

Polyclonal antibodies are purified by peptide affinity chromatography

MW

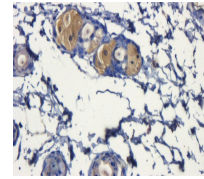
18 kDa

Uniprot ID
[P29456](#), [P22301](#), [P18893](#)
NCBI
[21, 000563](#), [11, 000572](#)
Entrez
[3586](#)
Dilution Range

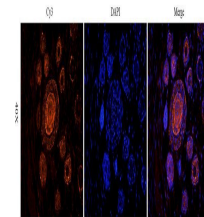
WB: 2 µg/ml, IHC-P: 1:100, IF/ICC: 1:100

Expiration Date

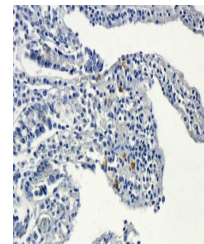
12 months from date of receipt.



Immunohistochemical staining of mouse skin...



Immunofluorescence image of mouse skin tissue...



Immunohistochemical staining of paraffin...