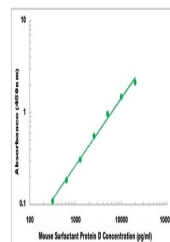


Product Datasheet

Mouse Surfactant Protein D ELISA Kit (orb219771)

Description	Sandwich ELISA for quantitative detection of Mouse Surfactant Protein D concentrations.
Reactivity	Mouse
Range	312 pg/ml - 20000 pg/ml
Tested Applications	ELISA
Target	SFTPD
Storage	Shipped and store at 4°C for 6 months, store at -20°C for one year. Avoid freeze/thaw cycles.
Note	For research use only
Application notes	Cell Culture Supernatants, Serum, Plasma Experiment Notes: Colorimetric
Sample Types	Cell Culture Supernates, Serum, Plasma
Uniprot ID	P50404
Sensitivity	10 pg/ml
Entrez	20390
Expiration Date	Please enquire.



Representative Standard Curve