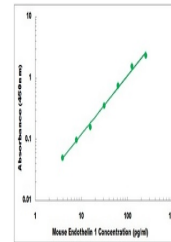


Product Datasheet

Mouse Endothelin 1 ELISA Kit (orb219671)

Description	Mouse Endothelin 1 ELISA Kit
Reactivity	Mouse
Range	3.9 pg/ml - 250 pg/ml
Tested Applications	ELISA
Target	EDN1
Storage	Shipped and store at 4°C for 6 months, store at -20°C for one year. Avoid freeze/thaw cycles.
Note	For research use only
Application notes	Cell Culture Supernatants, Serum, Plasma Experiment Notes: Colorimetric
Sample Types	Cell Culture Supernates, Serum, Plasma
Uniprot ID	P22387
Sensitivity	0.5 pg/ml
Entrez	13614
Expiration Date	Please enquire.



Representative Standard Curve