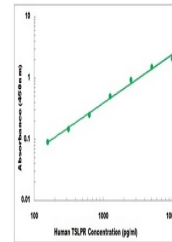


Product Datasheet

Human TSLPR ELISA Kit (orb219568)

Description	Sandwich ELISA for quantitative detection of Human TSLPR concentrations.
Reactivity	Human
Range	156 pg/ml - 10000 pg/ml
Tested Applications	ELISA
Target	CRLF2
Storage	Shipped and store at 4°C for 6 months, store at -20°C for one year. Avoid freeze/thaw cycles.
Note	For research use only
Application notes	Cell Culture Supernatants, Serum, Plasma Notes: Colorimetric
Sample Types	Cell Culture Supernates, Serum, Plasma
Uniprot ID	Q9HC73
Sensitivity	10 pg/ml
Entrez	64109
Expiration Date	Please enquire.



Representative
Standard
Curve