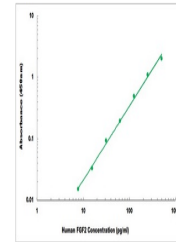


Product Datasheet

Human FGF2 ELISA Kit (orb219364)

Description	Sandwich ELISA for quantitative detection of Human FGF2 concentrations.
Reactivity	Human
Range	7.8 pg/ml - 500 pg/ml
Tested Applications	ELISA
Target	FGF2
Storage	Shipped and store at 4°C for 6 months, store at -20°C for one year. Avoid freeze/thaw cycles.
Note	For research use only
Application notes	Cell Culture Supernatants, Serum, Plasma, Tissue Homogenates Experiment Notes: Colorimetric
Sample Types	Cell Culture Supernates, Serum, Plasma, Tissue Homogenates
Uniprot ID	P09038
Sensitivity	4 pg/ml
Entrez	2247
Expiration Date	Please enquire.



Representative Standard Curve