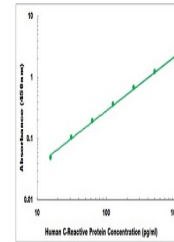


## Product Datasheet

### Human C-Reactive Protein ELISA Kit (orb219334)

<b>Description</b>	Human C-Reactive Protein ELISA Kit
<b>Reactivity</b>	Human
<b>Range</b>	15.6 pg/ml - 1000 pg/ml
<b>Tested Applications</b>	ELISA
<b>Target</b>	CRP
<b>Storage</b>	Shipped and store at 4°C for 6 months, store at -20°C for one year. Avoid freeze/thaw cycles.
<b>Note</b>	For research use only
<b>Application notes</b>	Cell Culture Supernatants, Serum, Plasma, Tissue Homogenates Experiment Notes: Colorimetric
<b>Sample Types</b>	Cell Culture Supernates, Serum, Plasma, Tissue Homogenates
<b>Uniprot ID</b>	<b>P02741</b>
<b>Sensitivity</b>	10 pg/ml
<b>Entrez</b>	<b>1401</b>
<b>Expiration Date</b>	Please enquire.



Representative Standard Curve