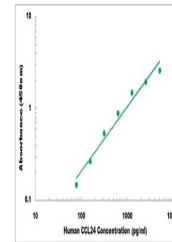


Product Datasheet

Human CCL24 ELISA Kit (orb219257)

Description	Human CCL24 ELISA Kit
Reactivity	Human
Range	78 pg/ml - 5000 pg/ml
Tested Applications	ELISA
Target	CCL24
Storage	Shipped and store at 4°C for 6 months, store at -20°C for one year. Avoid freeze/thaw cycles.
Note	For research use only
Application notes	Cell Culture Supernatants, Serum, Plasma Experiment Notes: Colorimetric
Sample Types	Cell Culture Supernates, Serum, Plasma
Uniprot ID	000175
Sensitivity	2 pg/ml
Entrez	6369
Expiration Date	Please enquire.



Representative
Standard
Curve