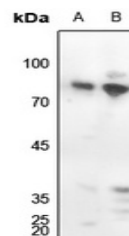


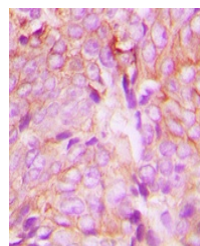
Product Datasheet

PRKCD antibody (orb216182)

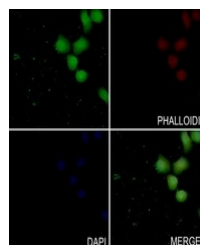
Description	Rabbit polyclonal antibody to PKC delta (Phospho-Y313)
Species/Host	Rabbit
Reactivity	Human, Primate, Rat
Conjugation	Unconjugated
Tested Applications	IF, IH, WB
Immunogen	KLH-conjugated synthetic phosphopeptide corresponding to residues surrounding Y313 of human PKC delta protein. The exact sequence is proprietary.
Target	PRKCD
Preservatives	Liquid in 0.42% Potassium phosphate, 0.87% Sodium chloride, pH 7.3, 30% glycerol, and 0.01% sodium azide.
Form/Appearance	Liquid in 0.42% Potassium phosphate, 0.87% Sodium chloride, pH 7.3, 30% glycerol, and 0.01% sodium azide.
Storage	Shipped at 4°C. Upon delivery aliquot and store at -20°C for one year. Avoid freeze/thaw cycles.
Note	For research use only
Clonality	Polyclonal
Source	Rabbit
Uniprot ID	Q05655
Entrez	5580
Dilution Range	WB: 1:500-1:1000, IHC-P: 1:100-1-200, IP: 1:10-1:100
Expiration Date	12 months from date of receipt.



Western blot analysis of PKC delta (Phos...



Immunohistochemical analysis of PKC delt...



Immunofluorescent analysis of PKC delta

...