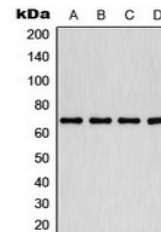


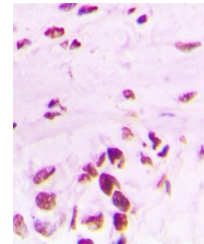
Product Datasheet

PLK1 antibody (orb216178)

Description	Rabbit polyclonal antibody to PLK1 (Phospho-T210)
Species/Host	Rabbit
Reactivity	Human, Porcine, Primate, Zebrafish
Conjugation	Unconjugated
Tested Applications	IH, WB
Immunogen	KLH-conjugated synthetic phosphopeptide corresponding to residues surrounding T210 of human PLK1 protein. The exact sequence is proprietary.
Target	PLK1
Preservatives	Liquid in 0.42% Potassium phosphate, 0.87% Sodium chloride, pH 7.3, 30% glycerol, and 0.01% sodium azide.
Form/Appearance	Liquid in 0.42% Potassium phosphate, 0.87% Sodium chloride, pH 7.3, 30% glycerol, and 0.01% sodium azide.
Storage	Shipped at 4°C. Upon delivery aliquot and store at -20°C for one year. Avoid freeze/thaw cycles.
Note	For research use only
Clonality	Polyclonal
Source	Rabbit
Uniprot ID	P53350
Entrez	5347
Dilution Range	WB: 1:500-1:1000, IHC-P: 1:100-1:200
Expiration Date	12 months from date of receipt.



Western blot analysis of PLK1 (Phospho-T...



Immunohistochemical analysis of PLK1 (Ph...