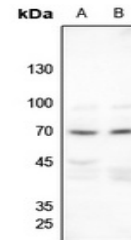


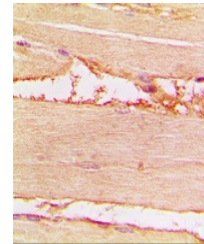
Product Datasheet

NF2 antibody (orb216168)

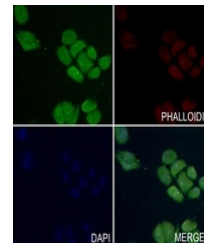
Description	Rabbit polyclonal antibody to Merlin (Phospho-S518)
Species/Host	Rabbit
Reactivity	Human, Mouse, Rat
Conjugation	Unconjugated
Tested Applications	IF, IH, WB
Immunogen	KLH-conjugated synthetic phosphopeptide corresponding to residues surrounding S518 of human Merlin protein. The exact sequence is proprietary.
Target	NF2
Preservatives	Liquid in 0.42% Potassium phosphate, 0.87% Sodium chloride, pH 7.3, 30% glycerol, and 0.01% sodium azide.
Form/Appearance	Liquid in 0.42% Potassium phosphate, 0.87% Sodium chloride, pH 7.3, 30% glycerol, and 0.01% sodium azide.
Storage	Maintain refrigerated at 2-8°C for up to 2 weeks. For long term storage store at -20°C in small aliquots to prevent freeze-thaw cycles.
Note	For research use only
Clonality	Polyclonal
Source	Rabbit
Uniprot ID	P35240 , P46662 , Q63648
Entrez	18016 , 25744 , 4771
Dilution Range	WB: 1:500-1:1000, IHC-P: 1:100-1-200
Expiration Date	12 months from date of receipt.



Western blot analysis of Merlin (Phospho...



Immunohistochemical analysis of Merlin (...)



Immunofluorescent analysis of Merlin (Ph...