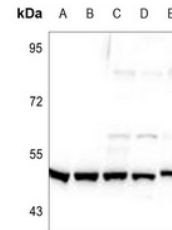


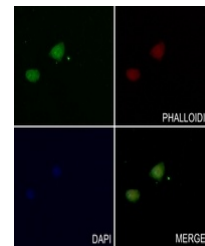
Product Datasheet

MAPT antibody (orb216148)

Description	Rabbit polyclonal antibody to TAU (Phospho-S713)
Species/Host	Rabbit
Reactivity	Human, Mouse, Porcine, Rat, Sheep
Conjugation	Unconjugated
Tested Applications	IF, WB
Immunogen	KLH-conjugated synthetic phosphopeptide corresponding to residues surrounding S713 of human TAU protein. The exact sequence is proprietary.
Target	MAPT
Preservatives	Liquid in 0.42% Potassium phosphate, 0.87% Sodium chloride, pH 7.3, 30% glycerol, and 0.01% sodium azide.
Form/Appearance	Liquid in 0.42% Potassium phosphate, 0.87% Sodium chloride, pH 7.3, 30% glycerol, and 0.01% sodium azide.
Storage	Maintain refrigerated at 2-8°C for up to 2 weeks. For long term storage store at -20°C in small aliquots to prevent freeze-thaw cycles.
Note	For research use only
Clonality	Polyclonal
Source	Rabbit
Uniprot ID	P19332, P10636, P10637
Entrez	17762, 4137
Dilution Range	WB: 1:500-1:1000, IP: 1:10-1:100
Expiration Date	12 months from date of receipt.



Western blot analysis of TAU (Phospho-S713)



Immunofluorescent analysis of TAU (Phospho-S713)