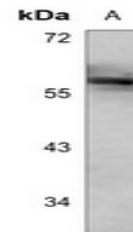


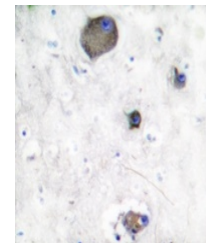
Product Datasheet

LYN antibody (orb216146)

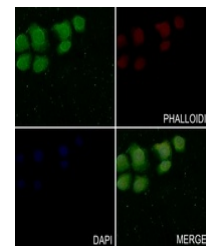
| | |
|----------------------------|---|
| Description | Rabbit polyclonal antibody to LYN (Phospho-Y508) |
| Species/Host | Rabbit |
| Reactivity | Human, Mouse, Rat, Sheep |
| Conjugation | Unconjugated |
| Tested Applications | IF, IH, WB |
| Immunogen | KLH-conjugated synthetic phosphopeptide corresponding to residues surrounding Y508 of human LYN protein. The exact sequence is proprietary. |
| Target | LYN |
| Preservatives | Liquid in 0.42% Potassium phosphate, 0.87% Sodium chloride, pH 7.3, 30% glycerol, and 0.01% sodium azide. |
| Form/Appearance | Liquid in 0.42% Potassium phosphate, 0.87% Sodium chloride, pH 7.3, 30% glycerol, and 0.01% sodium azide. |
| Storage | Maintain refrigerated at 2-8°C for up to 2 weeks. For long term storage store at -20°C in small aliquots to prevent freeze-thaw cycles. |
| Note | For research use only |
| Clonality | Polyclonal |
| Source | Rabbit |
| Uniprot ID | P25911, Q07014, P07948 |
| Entrez | 81515, 17096, 4067 |
| Dilution Range | WB: 1:500-1:1000 |
| Expiration Date | 12 months from date of receipt. |



Western blot analysis of LYN (Phospho-Y508)



Immunohistochemical analysis of LYN (Phospho-Y508)



Immunofluorescent analysis of LYN (Phospho-Y508)