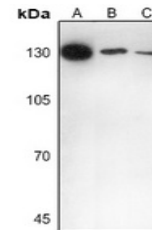


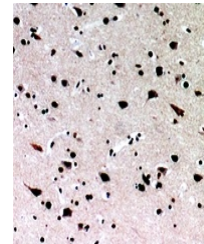
Product Datasheet

IL16 antibody (orb216134)

Description	Rabbit polyclonal antibody to IL-16
Species/Host	Rabbit
Reactivity	Human, Mouse, Rat
Conjugation	Unconjugated
Tested Applications	IH, WB
Immunogen	KLH-conjugated synthetic peptide encompassing a sequence within the C-term region of human IL-16. The exact sequence is proprietary.
Target	IL16
Preservatives	Liquid in 0.42% Potassium phosphate, 0.87% Sodium chloride, pH 7.3, 30% glycerol, and 0.01% sodium azide.
Form/Appearance	Liquid in 0.42% Potassium phosphate, 0.87% Sodium chloride, pH 7.3, 30% glycerol, and 0.01% sodium azide.
Storage	Maintain refrigerated at 2-8°C for up to 2 weeks. For long term storage store at -20°C in small aliquots to prevent freeze-thaw cycles.
Note	For research use only
Clonality	Polyclonal
Source	Rabbit
Uniprot ID	054824, Q14005
Entrez	16170, 3603
Dilution Range	WB: 1:500-1:1000, IP: 1:10-1:100
Expiration Date	12 months from date of receipt.



Western blot analysis of IL-16 expressio...



Immunohistochemical analysis of IL-16 st...