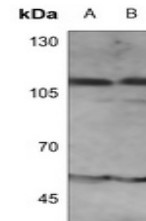


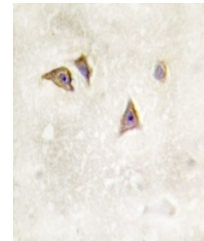
Product Datasheet

IFNAR1 antibody (orb216132)

Description	Rabbit polyclonal antibody to IFNAR1 (Phospho-Y466)
Species/Host	Rabbit
Reactivity	Human
Conjugation	Unconjugated
Tested Applications	IH, WB
Immunogen	KLH-conjugated synthetic phosphopeptide corresponding to residues surrounding Y466 of human IFNAR1 protein. The exact sequence is proprietary.
Target	IFNAR1
Preservatives	Liquid in 0.42% Potassium phosphate, 0.87% Sodium chloride, pH 7.3, 30% glycerol, and 0.01% sodium azide.
Form/Appearance	Liquid in 0.42% Potassium phosphate, 0.87% Sodium chloride, pH 7.3, 30% glycerol, and 0.01% sodium azide.
Storage	Maintain refrigerated at 2-8°C for up to 2 weeks. For long term storage store at -20°C in small aliquots to prevent freeze-thaw cycles.
Note	For research use only
Clonality	Polyclonal
Source	Rabbit
Uniprot ID	P17181
Entrez	3454
Dilution Range	WB: 1:500-1:1000, IP: 1:10-1:100
Expiration Date	12 months from date of receipt.



Western blot analysis of IFNAR1 (Phospho...



Immunohistochemical analysis of IFNAR1 (...)