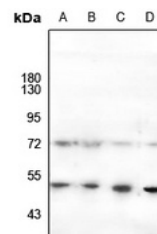


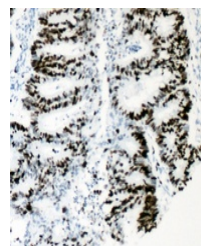
## Product Datasheet

### HNF4A antibody (orb216128)

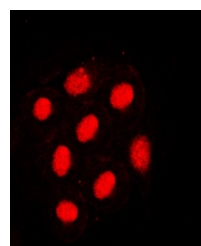
<b>Description</b>	Rabbit polyclonal antibody to HNF4 alpha (Phospho-S313)
<b>Species/Host</b>	Rabbit
<b>Reactivity</b>	Human, Mouse, Porcine, Primate, Rat
<b>Conjugation</b>	Unconjugated
<b>Tested Applications</b>	IF, IH, WB
<b>Immunogen</b>	KLH-conjugated synthetic phosphopeptide corresponding to residues surrounding S313 of human HNF4 alpha protein. The exact sequence is proprietary.
<b>Target</b>	HNF4A
<b>Preservatives</b>	Liquid in 0.42% Potassium phosphate, 0.87% Sodium chloride, pH 7.3, 30% glycerol, and 0.01% sodium azide.
<b>Form/Appearance</b>	Liquid in 0.42% Potassium phosphate, 0.87% Sodium chloride, pH 7.3, 30% glycerol, and 0.01% sodium azide.
<b>Storage</b>	Shipped at 4°C. Upon delivery aliquot and store at -20°C for one year. Avoid freeze/thaw cycles.
<b>Note</b>	For research use only
<b>Clonality</b>	Polyclonal
<b>Source</b>	Rabbit
<b>Uniprot ID</b>	<a href="#">P41235</a> , <a href="#">P22449</a> , <a href="#">P49698</a>
<b>Entrez</b>	<a href="#">25735</a> , <a href="#">15378</a> , <a href="#">3172</a>
<b>Dilution Range</b>	WB: 1:500-1:1000, IHC-P: 1:100-1-200, IF/ICC: 1:100-1:500
<b>Expiration Date</b>	12 months from date of receipt.



Western blot analysis of HNF4 alpha (Pho...



Immunohistochemical analysis of HNF4 alp...



Immunofluorescent analysis of HNF4 alpha...