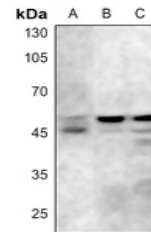


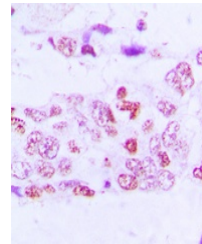
Product Datasheet

GSK3A; GSK3B antibody (orb216120)

Description	Rabbit polyclonal antibody to GSK3 alpha/beta (Phospho-Y279/216)
Species/Host	Rabbit
Reactivity	Human, Mouse, Rat, Zebrafish
Conjugation	Unconjugated
Tested Applications	IH, WB
Immunogen	KLH-conjugated synthetic phosphopeptide corresponding to residues surrounding Y279/216 of human GSK3 alpha/beta protein. The exact sequence is proprietary.
Target	GSK3A; GSK3B
Preservatives	Liquid in 0.42% Potassium phosphate, 0.87% Sodium chloride, pH 7.3, 30% glycerol, and 0.01% sodium azide.
Form/Appearance	Liquid in 0.42% Potassium phosphate, 0.87% Sodium chloride, pH 7.3, 30% glycerol, and 0.01% sodium azide.
Storage	Maintain refrigerated at 2-8°C for up to 2 weeks. For long term storage store at -20°C in small aliquots to prevent freeze-thaw cycles.
Note	For research use only
Clonality	Polyclonal
Source	Rabbit
Uniprot ID	Q9WV60 , P49841 , Q2NL51 , P18265 , P49840 , P18266
Entrez	50686 , 606496 , 2931 , 56637 , 84027
Dilution Range	WB: 1:500-1:1000, IHC-P: 1:100-1-200
Expiration Date	12 months from date of receipt.



Western blot analysis of GSK3 alpha/beta...



Immunohistochemical analysis of GSK3 alp...