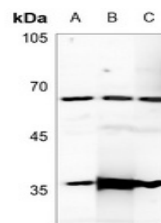


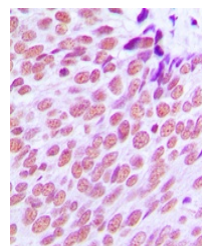
Product Datasheet

ESR1 antibody (orb216104)

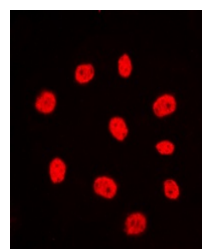
Description	Rabbit polyclonal antibody to Estrogen Receptor alpha
Species/Host	Rabbit
Reactivity	Human, Mouse, Porcine, Rat
Conjugation	Unconjugated
Tested Applications	IF, IH, WB
Immunogen	KLH-conjugated synthetic peptide encompassing a sequence within the C-term region of human Estrogen Receptor alpha. The exact sequence is proprietary.
Target	ESR1
Preservatives	Liquid in 0.42% Potassium phosphate, 0.87% Sodium chloride, pH 7.3, 30% glycerol, and 0.01% sodium azide.
Form/Appearance	Liquid in 0.42% Potassium phosphate, 0.87% Sodium chloride, pH 7.3, 30% glycerol, and 0.01% sodium azide.
Storage	Shipped at 4°C. Upon delivery aliquot and store at -20°C for one year. Avoid freeze/thaw cycles.
Note	For research use only
Clonality	Polyclonal
Source	Rabbit
Uniprot ID	P06211 , P03372 , P19785
Entrez	2099 , 13982 , 24890
Dilution Range	WB: 1:500-1:1000, IHC-P: 1:100-1-200, IF/ICC: 1:100-1:500
Expiration Date	12 months from date of receipt.



Western blot analysis of Estrogen Recept...



Immunohistochemical analysis of Estrogen...



Immunofluorescent analysis of Estrogen R...