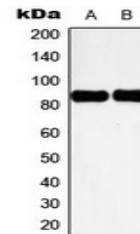


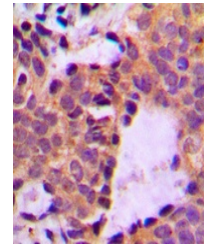
Product Datasheet

CTTN antibody (orb216100)

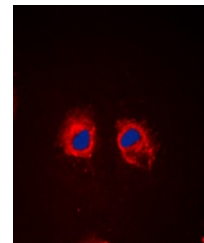
Description	Rabbit polyclonal antibody to Cortactin (Phospho-Y466)
Species/Host	Rabbit
Reactivity	Human, Mouse
Conjugation	Unconjugated
Tested Applications	IF, IH, WB
Immunogen	KLH-conjugated synthetic phosphopeptide corresponding to residues surrounding Y466 of human Cortactin protein. The exact sequence is proprietary.
Target	CTTN
Preservatives	Liquid in 0.42% Potassium phosphate, 0.87% Sodium chloride, pH 7.3, 30% glycerol, and 0.01% sodium azide.
Form/Appearance	Liquid in 0.42% Potassium phosphate, 0.87% Sodium chloride, pH 7.3, 30% glycerol, and 0.01% sodium azide.
Storage	Maintain refrigerated at 2-8°C for up to 2 weeks. For long term storage store at -20°C in small aliquots to prevent freeze-thaw cycles.
Note	For research use only
Clonality	Polyclonal
Source	Rabbit
Uniprot ID	Q60598 , Q14247
Entrez	2017 , 13043
Dilution Range	WB: 1:500-1:1000, IHC-P: 1:100-1-200, IF/ICC: 1:100-1:500, IP: 1:10-1:100
Expiration Date	12 months from date of receipt.



Western blot analysis of Cortactin (Phos...



Immunohistochemical analysis of Cortacti...



Immunofluorescent analysis of Cortactin

...