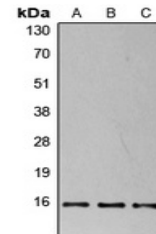


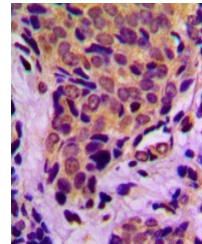
Product Datasheet

EIF4EBP1 antibody (orb216095)

Description	Rabbit polyclonal antibody to 4EBP1 (Phospho-T37)
Species/Host	Rabbit
Reactivity	Human, Mouse, Porcine, Rat
Conjugation	Unconjugated
Tested Applications	IH, WB
Immunogen	KLH-conjugated synthetic phosphopeptide corresponding to residues surrounding T37 of human 4EBP1 protein. The exact sequence is proprietary.
Target	EIF4EBP1
Preservatives	Liquid in 0.42% Potassium phosphate, 0.87% Sodium chloride, pH 7.3, 30% glycerol, and 0.01% sodium azide.
Form/Appearance	Liquid in 0.42% Potassium phosphate, 0.87% Sodium chloride, pH 7.3, 30% glycerol, and 0.01% sodium azide.
Storage	Maintain refrigerated at 2-8°C for up to 2 weeks. For long term storage store at -20°C in small aliquots to prevent freeze-thaw cycles.
Note	For research use only
Clonality	Polyclonal
Source	Rabbit
Uniprot ID	Q13541 , Q62622 , Q60876
Entrez	13685 , 116636 , 1978
Dilution Range	WB: 1:500-1:1000, IHC-P: 1:100-1-200
Expiration Date	12 months from date of receipt.



Western blot analysis of 4EBP1 (Phospho-...



Immunohistochemical analysis of 4EBP1 (P...